

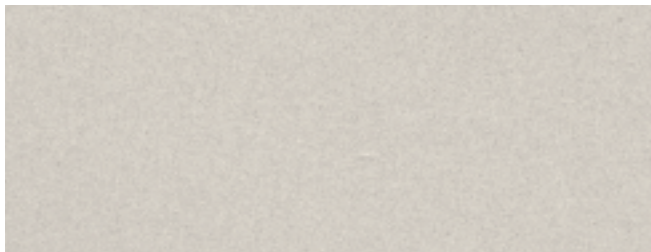
technical specifications

A black and white photograph of a construction site. In the foreground, a worker is kneeling on a concrete slab, their back to the camera. The worker is wearing a dark jacket and pants. The concrete slab is surrounded by a network of rebar (steel reinforcement bars) and formwork. The rebar is arranged in a grid pattern, and the formwork is made of wooden panels. The background shows more of the construction site, with concrete walls and a staircase. The overall scene is one of active construction work.

ARCHITECTURE

available sizes _ formato disponibile: **600 x 600 x 10,5 mm**

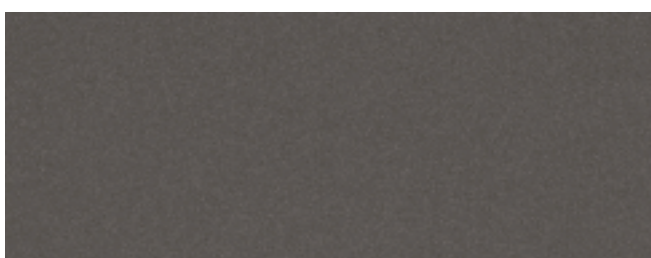
available finishing _ finiture disponibili: **UNPOLISHED _ NATURALE**



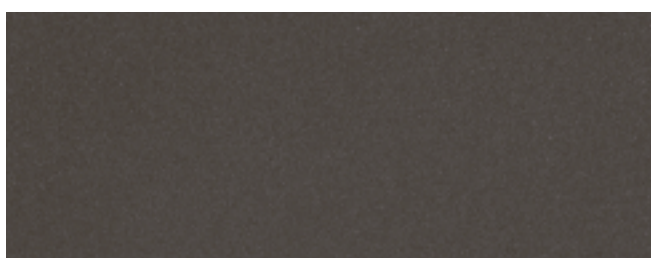
dark ivory matt



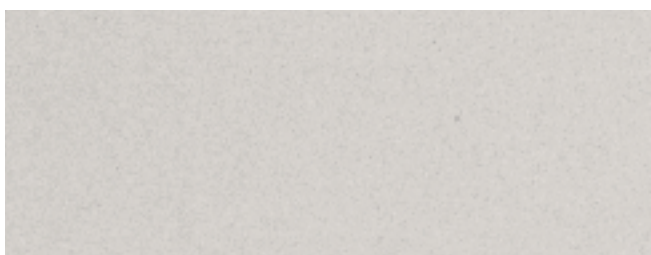
beige matt



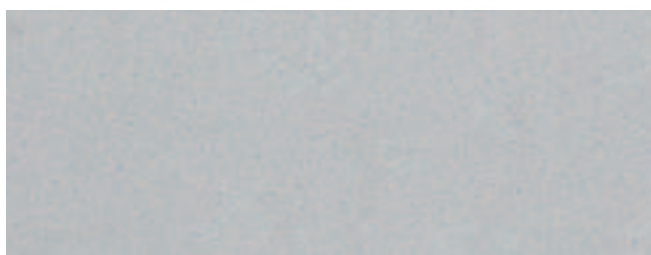
light brown matt



dark brown matt



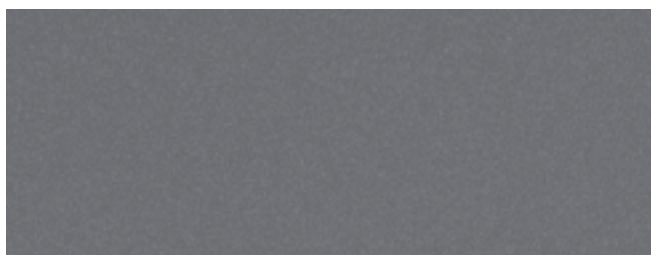
warm grey matt



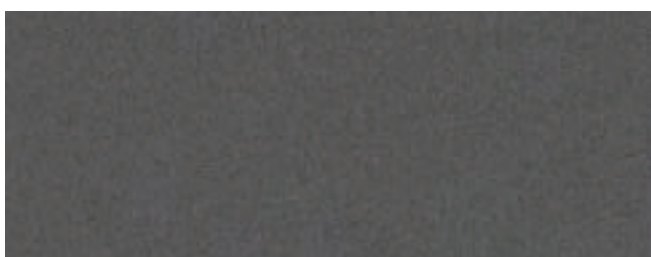
cool grey matt



light grey matt



medium grey matt



dark grey matt

HABITAT

available sizes _ formato disponibile: **600 x 600 x 10,5 mm**
available finishing _ finiture disponibili: **UNPOLISHED _ NATURALE**



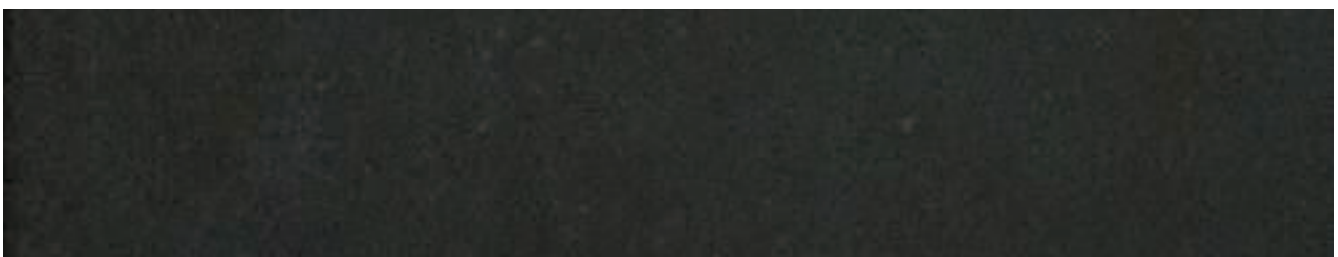
60DG



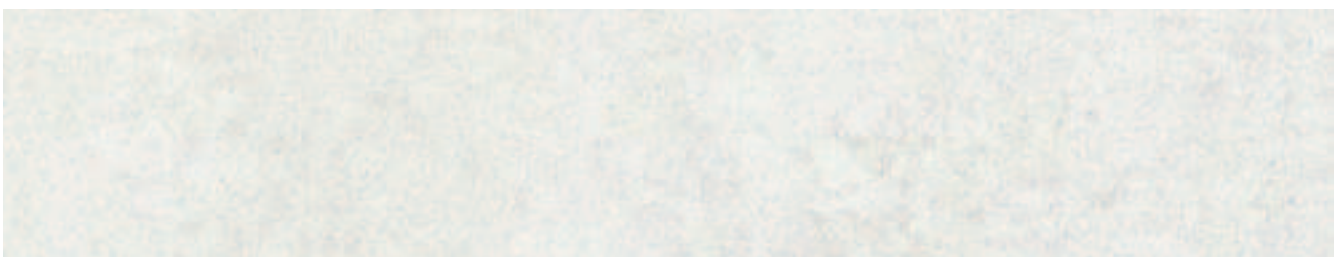
60G



60A



60N



60W

FACTORY
FINISHED PANELS

BARE
PANELS

SPECIAL
PANELS

technical
specifications

CERAMIC TILES _ GRÈS ÉMAILLÉ _ GRES PORCELLANATO

METEOR

available sizes _ formato disponibile: **600 x 600 x 10,5 mm**

available finishing _ finiture disponibili: **UNPOLISHED _ NATURALE / POLISHED _ LEVIGATA**



beige



brown



grigio



almond



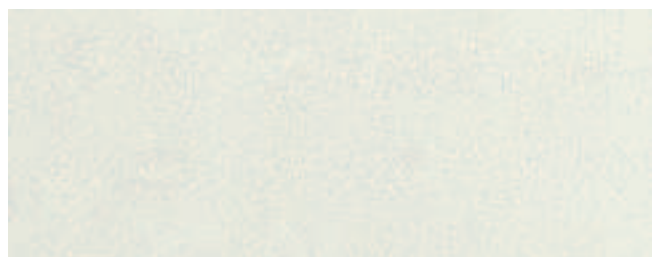
perla



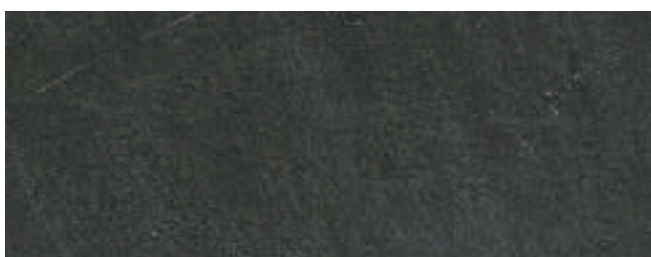
nero



india green



bianco



grafite



blu

MARTE - marble imitation _ MARTE - effetto marmorizzato

available sizes _ formato disponibile: **600 x 600 x 18 mm**
available finishing _ finiture disponibili: **POLISHED _ LEVIGATA**



acapulco black _ nero acapulco



moonlight _ raggio di luna



royal yellow _ giallo reale



soraya red _ rosso soraya



egean grey _ grigio egeo



bronzetto _ bronzetto



brasil pink _ rosa brasil



portugal pink _ rosa portogallo



ramora brown _ ramora brown



cream marfil _ crema marfil



palisander _ palissandro



botticino _ botticino

FACTORY
FINISHED PANELS

BARE
PANELS

SPECIAL
PANELS

technical
specifications

SOLID WOOD PARQUET

ESSENCES _ ESSENCES _ ESSENZE

available sizes _ formato disponibile: **600 x 600 mm**

standard thickness _ spessore standard: **4 mm (other thickness on request _ altri spessori a richiesta)**



iroko _ iroko



oak _ rovere



doussié africa _ africa doussié



beech _ faggio



ash _ frassino



afromosia _ afromosia



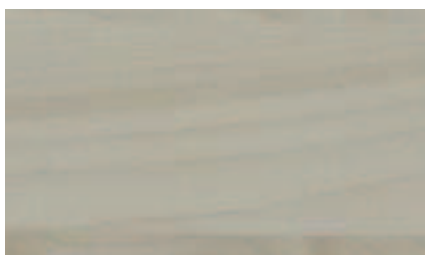
teak _ teak



europe cherry _ ciliegio europa



europe walnut _ noce europa



europe maple _ acero europa

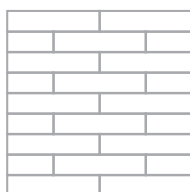


wengé _ wengé

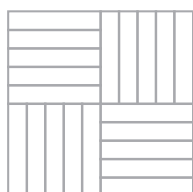
PARQUET DESIGN DESIGN PARQUET

available sizes _ formato disponibile: **600 x 600 mm**

standard thickness _ spessore standard: **4 mm (other thickness on request _ altri spessori a richiesta)**



quarterdeck
cassero



mosaic
mosaico



main deck
tolda di nave



friuli
friuli

Other types of solid wood parquet available on request _ Altri tipi di parquet disponibili a richiesta

BAMBOO _ BAMBOU _ BAMBÚ

available sizes _ formato disponibile: **600 x 600 mm**
 standard thickness _ spessore standard: **5 mm**



oak bamboo _ rovere bamboo



ash bamboo _ frassino bamboo

**strong,
 environment-friendly,
 and extremely stable**

Strong, environment-friendly, and extremely stable.
 The addition of a bamboo finish to CBI Europe's raised access floor range offers a greener, alternative floor surface. The introduction of bamboo is tangible proof of CBI Europe's commitment to protecting the environment. Bamboo is not only extremely strong but is the world's fastest growing plant (it can grow up to a metre a day in tropical regions). Use of bamboo therefore makes a major contribution to reducing the problem of deforestation. Often referred to as "natural steel", bamboo is cool to the touch in the summer and warm in the winter.

**résistant,
 écologiquement compatible,
 hautement stable**

Résistant, écologiquement compatible et hautement stable.
 L'introduction de la finition en bambou dans la gamme Raised Access Floors représente le choix écologique et alternatif de CBI, fruit d'un engagement concret à l'avantage de l'environnement: le bambou est une plante très résistante et avec la croissance la plus rapide au monde - 1 mètre par jour dans les régions tropicales; un facteur qui, en fait, réduit le problème de la déforestation. Également appelé «acier naturel», il est frais en été et chaud en hiver.

**resistente
 ecocompatibile
 altamente stabile**

Resistente, ecocompatibile ed altamente stabile.
 L'inserimento della finitura in bambu all'interno della gamma Raised Access Floors rappresenta la scelta verde ed alternativa di CBI, frutto di un concreto impegno a vantaggio dell'ambiente: il bambu è una pianta molto resistente e con la crescita più rapida al mondo - 1 metro al giorno nelle regioni tropicali, fattore che riduce di fatto il problema delle deforestazioni. Denominato anche "acciaio naturale", risulta fresco d'estate e caldo d'inverno.

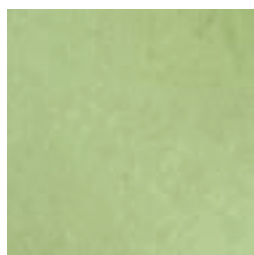
LINOLEUM

LINOLEUM _ LINOLÉUM _ LINOLEUM

available sizes _ formato disponibile: 600 x 600 x 2,0 / 2,5 / 3,2 mm



amber



applegreen



begonia



camel



charcoal



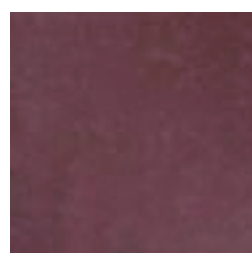
coral



corn



durango



granata



graphite



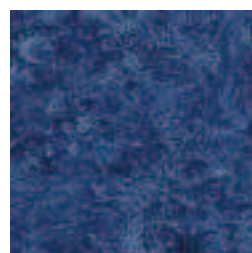
grass



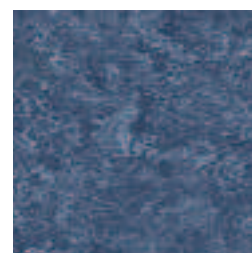
hyacinth



mint



navy



ocean



pale pink



pebble



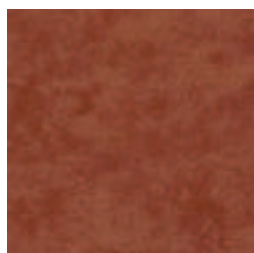
salmon



silk



storm



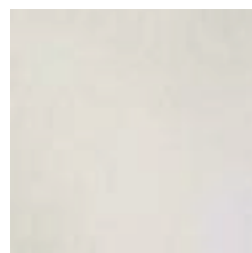
terracotta



tiger eye



travertine



white



willow green

The linoleum tiles used from CBI Europe are all original Tarkett _ I linoleum utilizzati da CBI Europe sono tutti originali Tarkett
Other types of linoleum, available on request _ Altri tipi di linoleum disponibili a richiesta

ANTISTATIC HPL _ HPL ANTISTATIQUE _ LAMINATO ANTISTATICO

available sizes _ formato disponibile: **600 x 600 mm**
 standard thickness _ spessore standard: **0,9 mm (other thickness on request _ altri spessori a richiesta)**



577 grey _ grigio



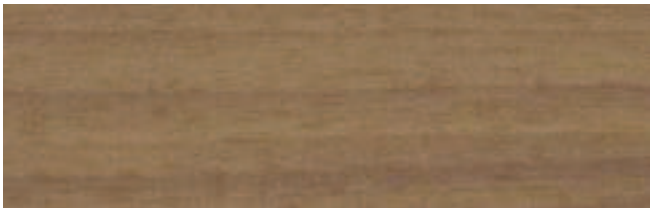
576 ivory _ avorio



1666 beech _ faggio



1611 maple _ acero



1329 doussié _ doussié



650 oak texas _ rovere texas



2810 cement _ cemento



616 walnut sabec _ noce sabec



1385 ash white _ bianco cenere



1661 oak _ rovere montano



671 rustic beech _ faggio rustico

Other types of antistatic HPL available on request _ Altri tipi di laminato antistatico disponibili a richiesta

The standard coverings used are all original Abet Walkprint finishing type SEI. _ I rivestimenti standard utilizzati sono tutti originali Abet Walkprint finitura SEI.

FACTORY FINISHED PANELS
 BARE PANELS
 SPECIAL PANELS



ANTISTATIC PVC

ANTISTATIC PVC _ PVC ANTISTATIQUE _ PVC ANTISTATICO

available sizes _ formato disponibile: 600 x 600 x 2,0 mm



0003 ivory

0010 azure

0120 borneo

0108 pepper

0002 platinum

Other types of antistatic pvc parquet available on request _ Altri tipi di pvc antistatico disponibili a richiesta

description

Total Thickness	EN ISO 24346 (EN 428)	mm	2.0
Weight	EN ISO 23997 (EN 430)	g/sq.m	3300
Width/Length of Sheet	EN ISO 24341 (EN 426)	cm/lm	200/20
Tile size	EN ISO 24342 (EN 427)	mm	300 x 300* / 608 x 608
Number of tiles per package	-	-	50/20

classification

Norm/Product Specification	-	-	EN ISO 10581 (EN 649)
European classification	EN ISO 10874 (EN 685)	class	34-43
Fire rating	EN 13 501-1	class	Bfl-s1
Static electrical propensity	EN 1815	kV	< 2

performance

Wear resistance	EN 660.2	mm ³	7.5
Wear Group	NF 189	group	M
Type Binder content	EN ISO 10581	type	II
Dimensional stability	EN ISO 23999 (EN 434)	%	sheet 0.40 tile 0.25
Residual indentation	EN ISO 24343-1 (EN 433)	mm	0.03
Castor Chair test (type W)	ISO 4918 (EN 425)	-	OK
Thermal Conductivity	EN ISO 10456 (EN 12524)	W/(m.K)	0.25
Colour Fastness	EN 20 105-B 02	degree	6
Surface Treatment	-	-	PUR
Chemical Products fastness	EN ISO 26987 (EN 423)	class	OK

environment / indoor air quality

TVOC after 28 days	ISO 16000-6	µg/ m ³	< 10
--------------------	-------------	--------------------	------

ce marking



EN 14 041

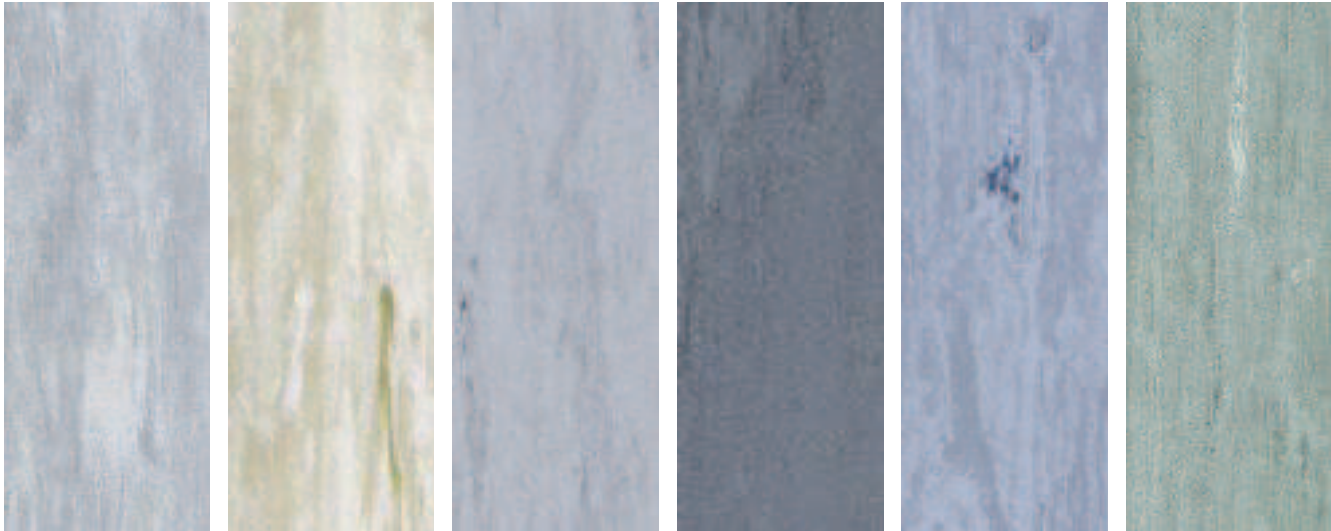
-



*upon special request

MIPOLAM ROBUST EL7

available sizes _ formato disponibile: 600 x 600 x 2,0 mm



0002 platinum 0003 ivory 0005 steel 0013 pewter 0112 storm 0306 green

Other types of antistatic pvc parquet available on request _ Altri tipi di pvc antistatico disponibili a richiesta

description

Total Thickness	EN ISO 24346 (EN 428)	mm	2.0
Weight	EN ISO 23997 (EN 430)	g/sq.m	3300
Width/Length of Sheet	EN ISO 24341 (EN 426)	cm/lm	200/20
Tile size	EN ISO 24342 (EN 427)	mm	608 x 608
Number of tiles per package	-	-	20

classification

Norm/Product Specification	-	-	EN ISO 10581 (EN 649)
European classification	EN ISO 10874 (EN 685)	class	34-43
Fire rating	EN 13 501-1	class	Bfl-s1
Electrical resist ance (1)	EN 1081	Ohm	106 R t 10 8
Static electrical propensity	EN 1815	kV	< 2

performance

Wear resistance	EN 660.2	mm ³	≤ 7.5
Wear Group	NF 189	group	M
Type Binder content	EN ISO 10581	type	II
Dimensional stability	EN ISO 23999 (EN 434)	%	sheet 0.40 tile 0.25
Residual indentation	EN ISO 24343-1 (EN 433)	mm	0.03
Castor Chair test (type W)	ISO 4918 (EN 425)	-	OK
Thermal Conductivity	EN ISO 10456 (EN 12524)	W/(m.K)	0.25
Colour Fastness	EN 20 105-B 02	degree	6
Surface Treatment	-	-	PUR
Chemical Products fastness	EN ISO 26987 (EN 423)	class	OK

environment / indoor air quality

TVOC after 28 days	ISO 16000-6	↔g/ m3	< 10
--------------------	-------------	--------	------

ce marking



EN 14 041

-



(1) Measured before installation

FACTORY FINISHED PANELS
BARE PANELS
SPECIAL PANELS

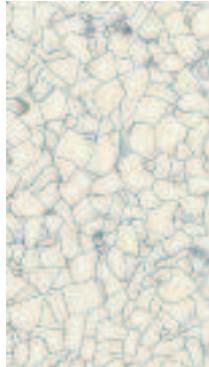


CONDUCTIVE PVC

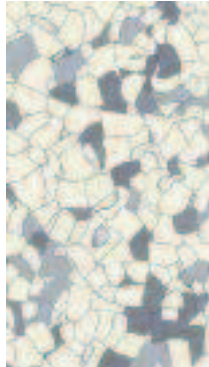
MIPOLAM TECHNIC EL5

available sizes _ formato disponibile: **600 x 600 mm**

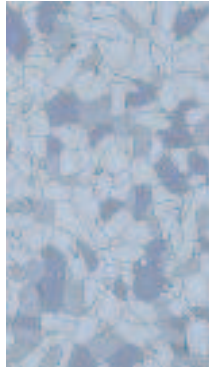
standard thickness _ spessore standard: **0,9 mm (other thickness on request _ altri spessori a richiesta)**



0635 white



0636 grey



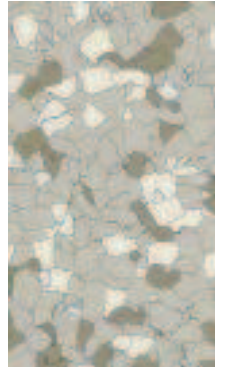
0637 light blue



0638 blue



0639 green



0640 beige

description

Total Thickness	EN ISO 24346 (EN 428)	mm	2.0
	ASTM F386-02	inch	0.08
Weight	EN ISO 23997 (EN 430)	g/m2	3800
Tile size	EN ISO 24342 (EN 427)	mm	608 x 608
Number of tiles per package	-	-	20

classification

Standard/Product Specification	-	-	EN ISO 10581 (EN 649)
European classification	EN ISO 10874 (EN 685)	class	34-43
Fire rating	EN 13 501-1	class	Bfl-s1
	EN 1081	Ohm	$104 \leq R_t \leq 10^6$
Electrical resistance (1)	IEC 61340 - 4 - 1	Ohm	$< 10^9$
	ANSI / ESD STM 7.1	Ohm	$< 10^9$
Static electrical propensity	EN 1815	kV	< 2
	IEC 61340 - 4 - 1	V	< 100 (2)
Protection against electrostatic discharges	ESD S20.20	-	OK
	IEC 61340 - 5 - 1	-	OK

performance

Wear resistance	EN 660.2	mm3	≤ 4.0
Wear Group	NF 189	group	P
Type Binder content	EN ISO 10581	type	II
Dimensional stability	EN ISO 23999 (EN 434)	%	≤ 0.25
Residual indentation	EN ISO 24343-1 (EN 433)	mm	0.03
Castor Chair test (type W)	ISO 4918 (EN 425)	-	OK
Thermal Conductivity	EN ISO 10456 (EN 12524)	W/(m.K)	0.25
Colour Fastness	EN 20 105-B 02	degree	≥ 6
Chemical Products fastness	EN ISO 26987 (EN 423)	class	OK

environment / indoor air quality

TVOC after 28 days	ISO 16000-6	$\mu\text{g}/\text{m}^3$	< 10
--------------------	-------------	--------------------------	--------

ce marking



EN 14 041

-



(1) Measured before installation

(2) Measured with ESD shoes (ABEBA and Uvex)



= 60 x 60 cm

TYPES OF PANEL

TYPES DE PANNEAUX _ TIPOLOGIE DI PANNELLO

FACTORY FINISHED PANELS

WOODCORE PANELS

panneaux en aggloméré de bois
pannelli in conglomerato ligneo



GRAVITY LAY

aluminum backing
feuille alu _ lamina di alluminio

PT30 - PT38
PT30 C - PT38C

GRAVITY LAY

galvanized steel dish
bac acier galvanisée à chaud
vaschetta di acciaio zincato

PT28V
PT30V
PT38V

CALCIUM SULPHATE PANELS

panneaux en sulfate de calcium
pannelli in solfato di calcio



GRAVITY LAY

aluminum backing
feuille alu _ lamina di alluminio

SC30 - SC34 - SC36
SC27C - SC30C

GRAVITY LAY

galvanized steel dish
bac acier galvanisée à chaud
vaschetta di acciaio zincato

SC30V - SC33V -
SC36V
SC30VHD - SC34VHD
SC36VHD

BARE PANELS

WOODCORE PANELS

panneaux en aggloméré de bois
pannelli in conglomerato ligneo



GRAVITY LAY

semi-encapsulated steel panels
panneaux semi-encapsulées en acier
semi-incapsulato in acciaio

CBI28T - CBI30T

GRAVITY LAY

fully steel encapsulated
encapsulée en acier _ incapsulato in acciaio

CBL1 - CBM -
CBH

CORNER LOCK

fully steel encapsulated
encapsulée en acier _ incapsulato in acciaio

CBL1 corner lock
CBL corner lock
CBH corner lock

ANGLE LOCK

fully steel encapsulated
encapsulée en acier _ incapsulato in acciaio

CBL1 angle lock
CBH angle lock

CALCIUM SULPHATE PANELS

panneaux en sulfate de calcium
pannelli in solfato di calcio



GRAVITY LAY

semi-encapsulated steel panels
panneaux semi-encapsulées en acier
semi-incapsulato in acciaio

CBI28S
CBI31S

GRAVITY LAY

fully steel encapsulated
encapsulée en acier _ incapsulato in acciaio

CBL1/S - CBM/S
CBH/S

CORNER LOCK

fully steel encapsulated
encapsulée en acier _ incapsulato in acciaio

CBL1/S corner lock

ANGLE LOCK

fully steel encapsulated
encapsulée en acier _ incapsulato in acciaio

CBL1/S angle lock

TONGUE&GROOVE

tongue&groove
tongue&groove _ tongue&groove

PS34TG
PS36TG

galvanized steel dish
bac acier galvanisée à chaud
vaschetta di acciaio zincato

CBI30TG
CBI36TG

FACTORY FINISHED PANELS

BARE PANELS

SPECIAL PANELS

technical specifications

RAISED ACCESS FLOORS

BARE PANELS



= 60 x 60 cm

SEMI-ENCAPSULATED STEEL PANELS _ PANNEAUX SEMI-ENCAPSULÉES EN ACIER

SEMI-INCAPSULATO IN ACCIAIO

> **Galvanized steel** · acier zingué · acciaio zincato **thickness 0.5 mm**

> **Calcium sulphate** · sulfate de calcium · solfato di calcio

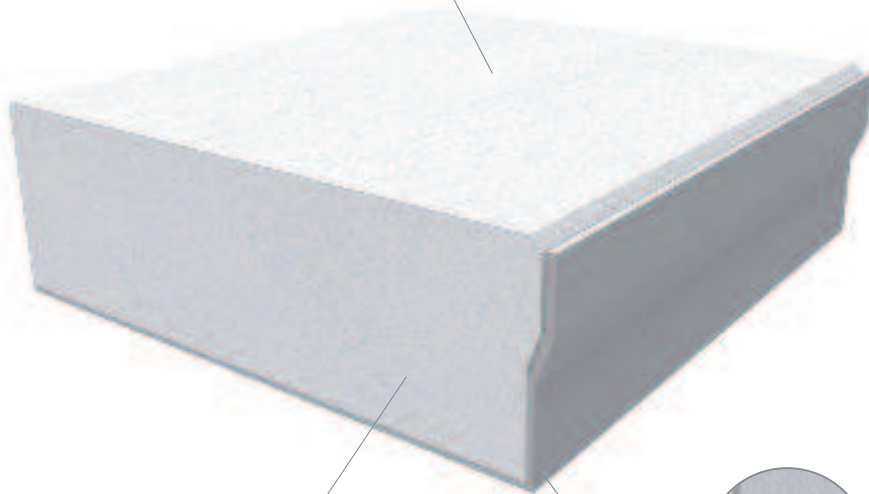
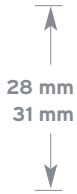
> **Covering**: Carpet lay-loose tiles. PVC/rubber lay-loose tiles. **Revêtement supérieur**: Moquette auto-adhésive; PVC auto-adhésif.

Rivestimento superiore: Moquette autoposante, PVC autoposante.

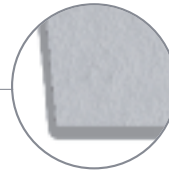


top covering _ revêtement supérieur
rivestimento superiore

> **finishes_finitions_acabados_finiture**




calcium sulphate
sulfate de calcium
solfato di calcio






galvanized steel
acier zingué
acciaio zincato

thickness 0.5 mm

TECHNICAL SPECIFICATIONS

	CBI28S	CBI31S
thickness	28 mm	31 mm
 fire reaction UNI EN 13501-1	A1	A1
fire resistance UNI EN 13501-2	REI 60-r	REI 60-r

TECHNICAL FEATURES UNI EN 12825

		CBI28S	CBI31S
	center of panel - deflection 2,5 mm	3,4 kN	4 kN
	center of panel - ultimate load	8,6 kN	8,8 kN
	loading class	3	3
	center of panel - deflection 2,5 mm	4,2 kN	4,6 kN
	center of panel - ultimate load	9,6 kN	10,2 kN
	loading class	4	5
	center of panel - deflection 2,5 mm	4,7 kN	4,9 kN
	center of panel - ultimate load	9,9 kN	10,5 kN
	loading class	4	5

The load resistance tests have been performed in CBI Europe's internal laboratory and simulate the test method indicated by UNI EN 12825: 2001. The results obtained at a height of 20 cm may vary depending on the installation and the general conditions of the site. If the project requires a certification from a third party this must be explicitly requested.

Le prove di resistenza al carico sono state eseguite nel laboratorio interno CBI Europe e simulano il metodo di prova indicato dalla normativa UNI EN 12825:2001. I risultati ottenuti ad un'altezza di 20 cm possono variare in funzione dell'installazione e delle condizioni generali del cantiere. Qualora il progetto richieda una certificazione da un ente terzo questa dovrà essere espressamente richiesta.

FACTORY
FINISHED PANELS

BARE
PANELS

SPECIAL
PANELS

technical
specifications