

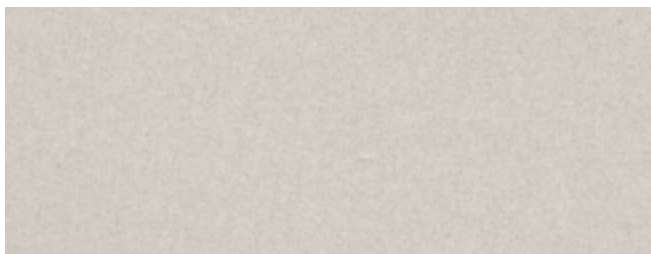
# technical specifications

A black and white photograph of a construction site. In the foreground, a worker is kneeling on a concrete slab, their back to the camera. They are wearing a dark jacket and pants. The worker is surrounded by a network of rebar (steel reinforcement) and concrete formwork. The rebar is laid out in a grid pattern, and the formwork is used to shape the concrete. The background shows more of the construction site, with concrete slabs and rebar extending into the distance. The overall scene is one of active construction work.

## ARCHITECTURE

available sizes \_ formato disponibile: **600 x 600 x 10,5 mm**

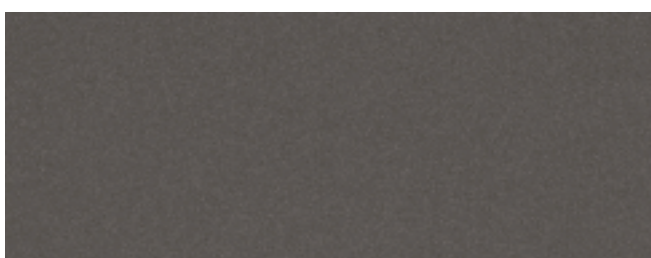
available finishing \_ finiture disponibili: **UNPOLISHED \_ NATURALE**



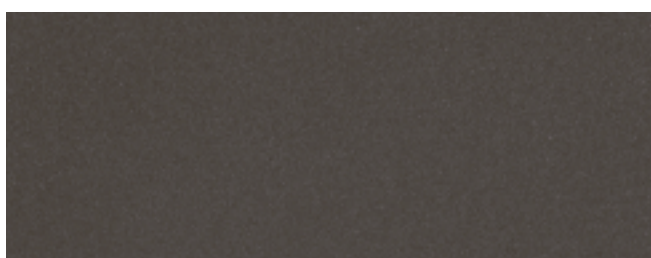
dark ivory matt



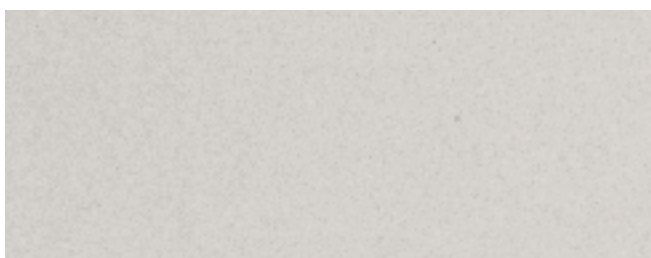
beige matt



light brown matt



dark brown matt



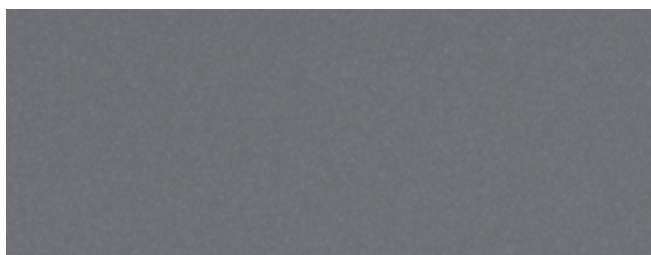
warm grey matt



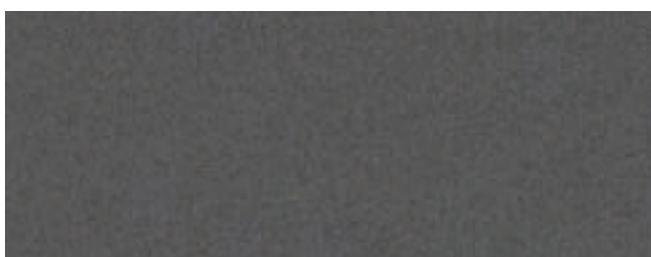
cool grey matt



light grey matt



medium grey matt



dark grey matt

**HABITAT**

available sizes \_ formato disponibile: **600 x 600 x 10,5 mm**  
available finishing \_ finiture disponibili: **UNPOLISHED \_ NATURALE**



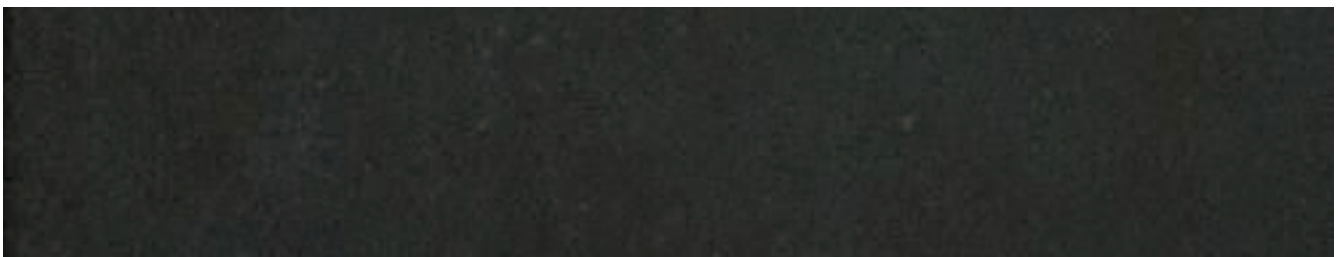
60DG



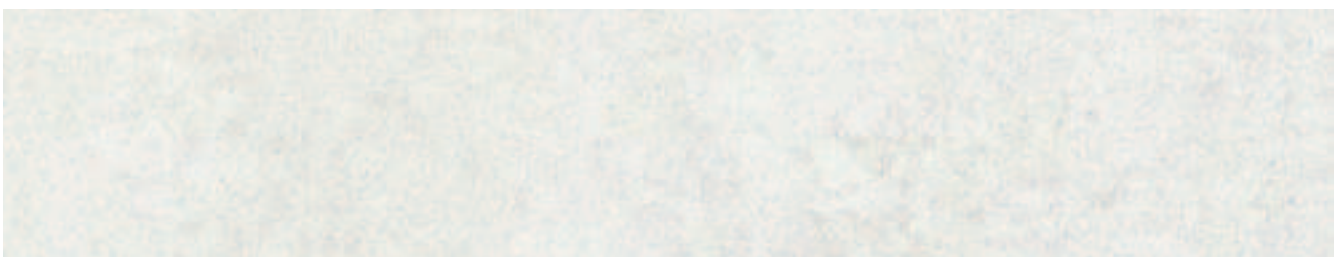
60G



60A



60N



60W

FACTORY  
FINISHED PANELS

BARE  
PANELS

SPECIAL  
PANELS

technical  
specifications

CERAMIC TILES \_ GRÈS ÉMAILLÉ \_ GRES PORCELLANATO

---

**METEOR**

available sizes \_ formato disponibile: **600 x 600 x 10,5 mm**

available finishing \_ finiture disponibili: **UNPOLISHED \_ NATURALE / POLISHED \_ LEVIGATA**



beige



brown



grigio



almond



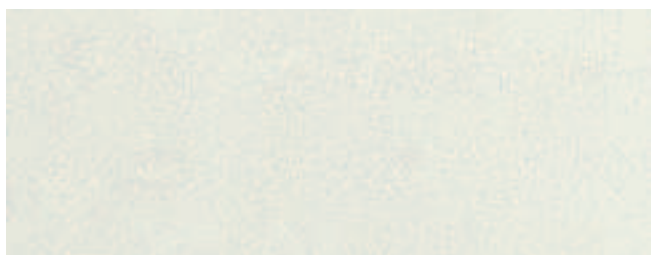
perla



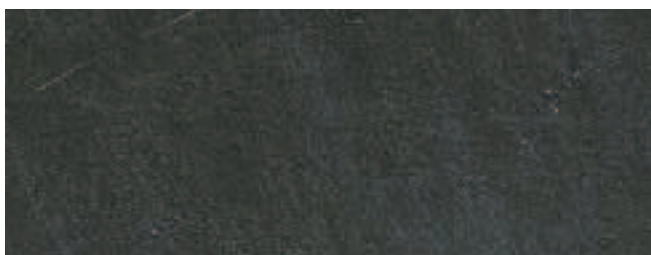
nero



india green



bianco



grafite



blu

**MARTE - marble imitation \_ MARTE - effetto marmorizzato**

available sizes \_ formato disponibile: **600 x 600 x 18 mm**  
available finishing \_ finiture disponibili: **POLISHED \_ LEVIGATA**



acapulco black \_ nero acapulco



moonlight \_ raggio di luna



royal yellow \_ giallo reale



soraya red \_ rosso soraya



egean grey \_ grigio egeo



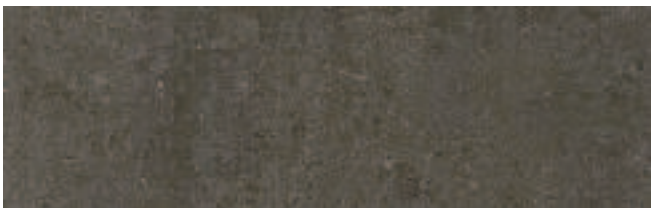
bronzetto \_ bronzetto



brasil pink \_ rosa brasil



portugal pink \_ rosa portogallo



ramora brown \_ ramora brown



cream marfil \_ crema marfil



palisander \_ palissandro



botticino \_ botticino

## SOLID WOOD PARQUET

### ESSENCES \_ ESSENCES \_ ESSENZE

available sizes \_ formato disponibile: **600 x 600 mm**

standard thickness \_ spessore standard: **4 mm (other thickness on request \_ altri spessori a richiesta)**



iroko \_ iroko



oak \_ rovere



doussié africa \_ africa doussié



beech \_ faggio



ash \_ frassino



afromosia \_ afromosia



teak \_ teak



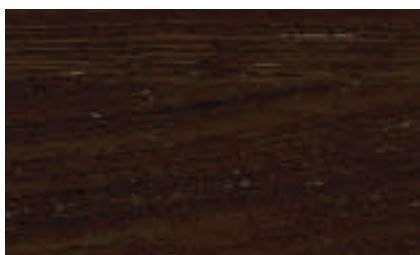
europe cherry \_ ciliegio europa



europe walnut \_ noce europa



europe maple \_ acero europa

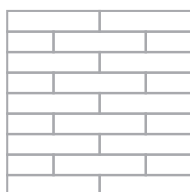


wengé \_ wengé

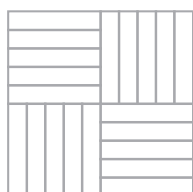
### PARQUET DESIGN DESIGN PARQUET

available sizes \_ formato disponibile: **600 x 600 mm**

standard thickness \_ spessore standard: **4 mm (other thickness on request \_ altri spessori a richiesta)**



quarterdeck  
cassero



mosaic  
mosaico



main deck  
tolda di nave



friuli  
friuli

Other types of solid wood parquet available on request \_ Altri tipi di parquet disponibili a richiesta

**BAMBOO \_ BAMBOU \_ BAMBÚ**

available sizes \_ formato disponibile: **600 x 600 mm**  
 standard thickness \_ spessore standard: **5 mm**



oak bamboo \_ rovere bamboo



ash bamboo \_ frassino bamboo

**strong,  
 environment-friendly,  
 and extremely stable**

Strong, environment-friendly, and extremely stable. The addition of a bamboo finish to CBI Europe's raised access floor range offers a greener, alternative floor surface. The introduction of bamboo is tangible proof of CBI Europe's commitment to protecting the environment. Bamboo is not only extremely strong but is the world's fastest growing plant (it can grow up to a metre a day in tropical regions). Use of bamboo therefore makes a major contribution to reducing the problem of deforestation. Often referred to as "natural steel", bamboo is cool to the touch in the summer and warm in the winter.

**résistant,  
 écologiquement compatible,  
 hautement stable**

Résistant, écologiquement compatible et hautement stable. L'introduction de la finition en bambou dans la gamme Raised Access Floors représente le choix écologique et alternatif de CBI, fruit d'un engagement concret à l'avantage de l'environnement: le bambou est une plante très résistante et avec la croissance la plus rapide au monde - 1 mètre par jour dans les régions tropicales; un facteur qui, en fait, réduit le problème de la déforestation. Également appelé «acier naturel», il est frais en été et chaud en hiver.

**resistente  
 ecocompatibile  
 altamente stabile**

Resistente, ecocompatibile ed altamente stabile. L'inserimento della finitura in bambu all'interno della gamma Raised Access Floors rappresenta la scelta verde ed alternativa di CBI, frutto di un concreto impegno a vantaggio dell'ambiente: il bambu è una pianta molto resistente e con la crescita più rapida al mondo - 1 metro al giorno nelle regioni tropicali, fattore che riduce di fatto il problema delle deforestazioni. Denominato anche "acciaio naturale", risulta fresco d'estate e caldo d'inverno.

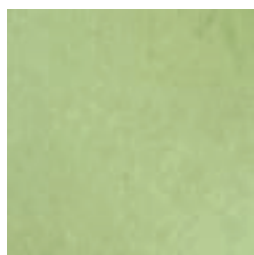
## LINOLEUM

### LINOLEUM \_ LINOLÉUM \_ LINOLEUM

available sizes \_ formato disponibile: 600 x 600 x 2,0 / 2,5 / 3,2 mm



amber



applegreen



begonia



camel



charcoal



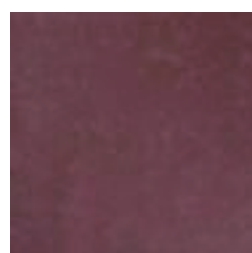
coral



corn



durango



granata



graphite



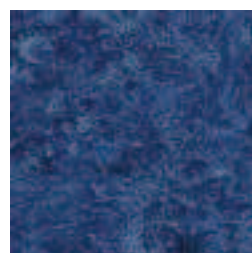
grass



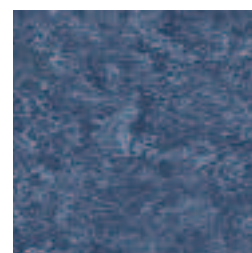
hyacinth



mint



navy



ocean



pale pink



pebble



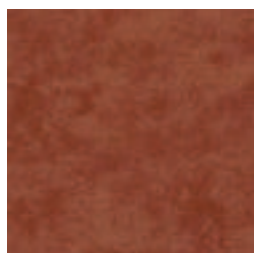
salmon



silk



storm



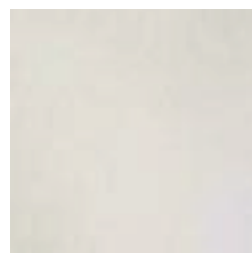
terracotta



tiger eye



travertine



white



willow green

The linoleum tiles used from CBI Europe are all original Tarkett \_ I linoleum utilizzati da CBI Europe sono tutti originali Tarkett  
Other types of linoleum, available on request \_ Altri tipi di linoleum disponibili a richiesta



**ANTISTATIC HPL \_ HPL ANTISTATIQUE \_ LAMINATO ANTISTATICO**

available sizes \_ formato disponibile: **600 x 600 mm**  
 standard thickness \_ spessore standard: **0,9 mm (other thickness on request \_ altri spessori a richiesta)**



577 grey \_ grigio



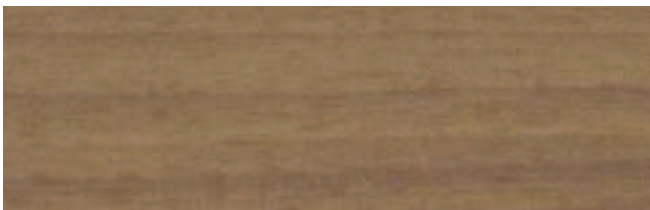
576 ivory \_ avorio



1666 beech \_ faggio



1611 maple \_ acero



1329 doussié \_ doussié



650 oak texas \_ rovere texas



2810 cement \_ cemento



616 walnut sabec \_ noce sabec



1385 ash white \_ bianco cenere



1661 oak \_ rovere montano



671 rustic beech \_ faggio rustico

Other types of antistatic HPL available on request \_ Altri tipi di laminato antistatico disponibili a richiesta

The standard coverings used are all original Abet Walkprint finishing type SEI. \_ I rivestimenti standard utilizzati sono tutti originali Abet Walkprint finitura SEI.

## ANTISTATIC PVC

### ANTISTATIC PVC \_ PVC ANTISTATIQUE \_ PVC ANTISTATICO

available sizes \_ formato disponibile: 600 x 600 x 2,0 mm



0003 ivory

0010 azure

0120 borneo

0108 pepper

0002 platinum

Other types of antistatic pvc parquet available on request \_ Altri tipi di pvc antistatico disponibili a richiesta

#### description

Total Thickness	EN ISO 24346 (EN 428)	mm	2.0
Weight	EN ISO 23997 (EN 430)	g/sq.m	3300
Width/Length of Sheet	EN ISO 24341 (EN 426)	cm/lm	200/20
Tile size	EN ISO 24342 (EN 427)	mm	300 x 300* / 608 x 608
Number of tiles per package	-	-	50/20

#### classification

Norm/Product Specification	-	-	EN ISO 10581 (EN 649)
European classification	EN ISO 10874 (EN 685)	class	34-43
Fire rating	EN 13 501-1	class	Bfl-s1
Static electrical propensity	EN 1815	kV	< 2

#### performance

Wear resistance	EN 660.2	mm <sup>3</sup>	7.5
Wear Group	NF 189	group	M
Type Binder content	EN ISO 10581	type	II
Dimensional stability	EN ISO 23999 (EN 434)	%	sheet 0.40 tile 0.25
Residual indentation	EN ISO 24343-1 (EN 433)	mm	0.03
Castor Chair test (type W)	ISO 4918 (EN 425)	-	OK
Thermal Conductivity	EN ISO 10456 (EN 12524)	W/(m.K)	0.25
Colour Fastness	EN 20 105-B 02	degree	6
Surface Treatment	-	-	PUR
Chemical Products fastness	EN ISO 26987 (EN 423)	class	OK

#### environment / indoor air quality

TVOC after 28 days	ISO 16000-6	µg/ m <sup>3</sup>	< 10
--------------------	-------------	--------------------	------

#### ce marking



EN 14 041

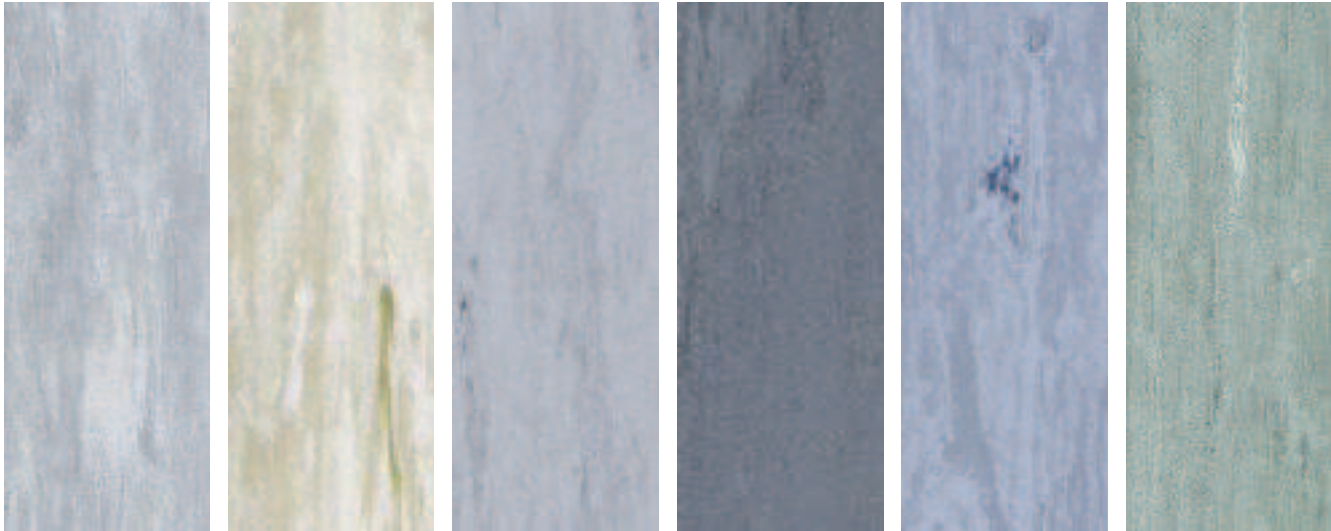
-



\*upon special request

**MIPOLAM ROBUST EL7**

available sizes \_ formato disponibile: 600 x 600 x 2,0 mm



0002 platinum      0003 ivory      0005 steel      0013 pewter      0112 storm      0306 green

Other types of antistatic pvc parquet available on request \_ Altri tipi di pvc antistatico disponibili a richiesta

**description**

Total Thickness	EN ISO 24346 (EN 428)	mm	2.0
Weight	EN ISO 23997 (EN 430)	g/sq.m	3300
Width/Length of Sheet	EN ISO 24341 (EN 426)	cm/lm	200/20
Tile size	EN ISO 24342 (EN 427)	mm	608 x 608
Number of tiles per package	-	-	20

**classification**

Norm/Product Specification	-	-	EN ISO 10581 (EN 649)
European classification	EN ISO 10874 (EN 685)	class	34-43
Fire rating	EN 13 501-1	class	Bfl-s1
Electrical resist ance (1)	EN 1081	Ohm	106 R t 10 8
Static electrical propensity	EN 1815	kV	< 2

**performance**

Wear resistance	EN 660.2	mm <sup>3</sup>	≤ 7.5
Wear Group	NF 189	group	M
Type Binder content	EN ISO 10581	type	II
Dimensional stability	EN ISO 23999 (EN 434)	%	sheet 0.40 tile 0.25
Residual indentation	EN ISO 24343-1 (EN 433)	mm	0.03
Castor Chair test (type W)	ISO 4918 (EN 425)	-	OK
Thermal Conductivity	EN ISO 10456 (EN 12524)	W/(m.K)	0.25
Colour Fastness	EN 20 105-B 02	degree	6
Surface Treatment	-	-	PUR
Chemical Products fastness	EN ISO 26987 (EN 423)	class	OK

**environment / indoor air quality**

TVOC after 28 days	ISO 16000-6	↔g/ m3	< 10
--------------------	-------------	--------	------

**ce marking**



EN 14 041

-



(1) Measured before installation

FACTORY FINISHED PANELS  
BARE PANELS  
SPECIAL PANELS



## CONDUCTIVE PVC

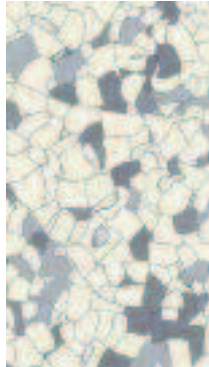
### MIPOLAM TECHNIC EL5

available sizes \_ formato disponibile: **600 x 600 mm**

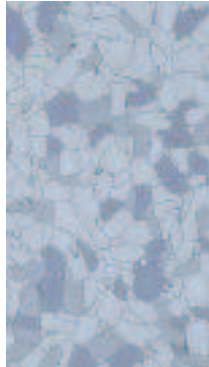
standard thickness \_ spessore standard: **0,9 mm (other thickness on request \_ altri spessori a richiesta)**



0635 white



0636 grey



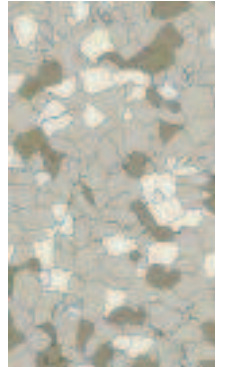
0637 light blue



0638 blue



0639 green



0640 beige

#### description

Total Thickness	EN ISO 24346 (EN 428)	mm	2.0
	ASTM F386-02	inch	0.08
Weight	EN ISO 23997 (EN 430)	g/m2	3800
Tile size	EN ISO 24342 (EN 427)	mm	608 x 608
Number of tiles per package	-	-	20

#### classification

Standard/Product Specification	-	-	EN ISO 10581 (EN 649)
European classification	EN ISO 10874 (EN 685)	class	34-43
Fire rating	EN 13 501-1	class	Bfl-s1
	EN 1081	Ohm	$104 \leq R_t \leq 10^6$
Electrical resistance (1)	IEC 61340 - 4 - 1	Ohm	$< 10^9$
	ANSI / ESD STM 7.1	Ohm	$< 10^9$
Static electrical propensity	EN 1815	kV	$< 2$
	IEC 61340 - 4 - 1	V	$< 100$ (2)
Protection against electrostatic discharges	ESD S20.20	-	OK
	IEC 61340 - 5 - 1	-	OK

#### performance

Wear resistance	EN 660.2	mm3	$\leq 4.0$
Wear Group	NF 189	group	P
Type Binder content	EN ISO 10581	type	II
Dimensional stability	EN ISO 23999 (EN 434)	%	$\leq 0.25$
Residual indentation	EN ISO 24343-1 (EN 433)	mm	0.03
Castor Chair test (type W)	ISO 4918 (EN 425)	-	OK
Thermal Conductivity	EN ISO 10456 (EN 12524)	W/(m.K)	0.25
Colour Fastness	EN 20 105-B 02	degree	$\geq 6$
Chemical Products fastness	EN ISO 26987 (EN 423)	class	OK

#### environment / indoor air quality

TVOC after 28 days	ISO 16000-6	$\mu\text{g}/\text{m}^3$	$< 10$
--------------------	-------------	--------------------------	--------

#### ce marking



EN 14 041

-



(1) Measured before installation

(2) Measured with ESD shoes (ABEBA and Uvex)



= 60 x 60 cm

**TYPES OF PANEL**

TYPES DE PANNEAUX \_ TIPOLOGIE DI PANNELLO

**FACTORY FINISHED PANELS**

**WOODCORE PANELS**

panneaux en aggloméré de bois  
pannelli in conglomerato ligneo



GRAVITY LAY

**aluminum backing**  
feuille alu \_ lamina di alluminio

**PT30 - PT38**  
**PT30 C - PT38C**

GRAVITY LAY

**galvanized steel dish**  
bac acier galvanisée à chaud  
vaschetta di acciaio zincato

**PT28V**  
**PT30V**  
**PT38V**

**CALCIUM SULPHATE PANELS**

panneaux en sulfate de calcium  
pannelli in solfato di calcio



GRAVITY LAY

**aluminum backing**  
feuille alu \_ lamina di alluminio

**SC30 - SC34 - SC36**  
**SC27C - SC30C**

GRAVITY LAY

**galvanized steel dish**  
bac acier galvanisée à chaud  
vaschetta di acciaio zincato

**SC30V - SC33V -**  
**SC36V**  
**SC30VHD - SC34VHD**  
**SC36VHD**

**BARE PANELS**

**WOODCORE PANELS**

panneaux en aggloméré de bois  
pannelli in conglomerato ligneo



GRAVITY LAY

**semi-encapsulated steel panels**  
panneaux semi-encapsulées en acier  
semi-incapsulato in acciaio

**CBI28T - CBI30T**

GRAVITY LAY

**fully steel encapsulated**  
encapsulée en acier \_ incapsulato in acciaio

**CBL1 - CBM -**  
**CBH**

CORNER LOCK

**fully steel encapsulated**  
encapsulée en acier \_ incapsulato in acciaio

**CBL1 corner lock**  
**CBL corner lock**  
**CBH corner lock**

ANGLE LOCK

**fully steel encapsulated**  
encapsulée en acier \_ incapsulato in acciaio

**CBL1 angle lock**  
**CBH angle lock**

**CALCIUM SULPHATE PANELS**

panneaux en sulfate de calcium  
pannelli in solfato di calcio



GRAVITY LAY

**semi-encapsulated steel panels**  
panneaux semi-encapsulées en acier  
semi-incapsulato in acciaio

**CBI28S**  
**CBI31S**

GRAVITY LAY

**fully steel encapsulated**  
encapsulée en acier \_ incapsulato in acciaio

**CBL1/S - CBM/S**  
**CBH/S**

CORNER LOCK

**fully steel encapsulated**  
encapsulée en acier \_ incapsulato in acciaio

**CBL1/S corner lock**

ANGLE LOCK

**fully steel encapsulated**  
encapsulée en acier \_ incapsulato in acciaio

**CBL1/S angle lock**

TONGUE&GROOVE

**tongue&groove**  
tongue&groove \_ tongue&groove

**PS34TG**  
**PS36TG**

**galvanized steel dish**  
bac acier galvanisée à chaud  
vaschetta di acciaio zincato

**CBI30TG**  
**CBI36TG**

FACTORY FINISHED PANELS

BARE PANELS

SPECIAL PANELS

technical specifications

## RAISED ACCESS FLOORS

### FACTORY FINISHED PANELS

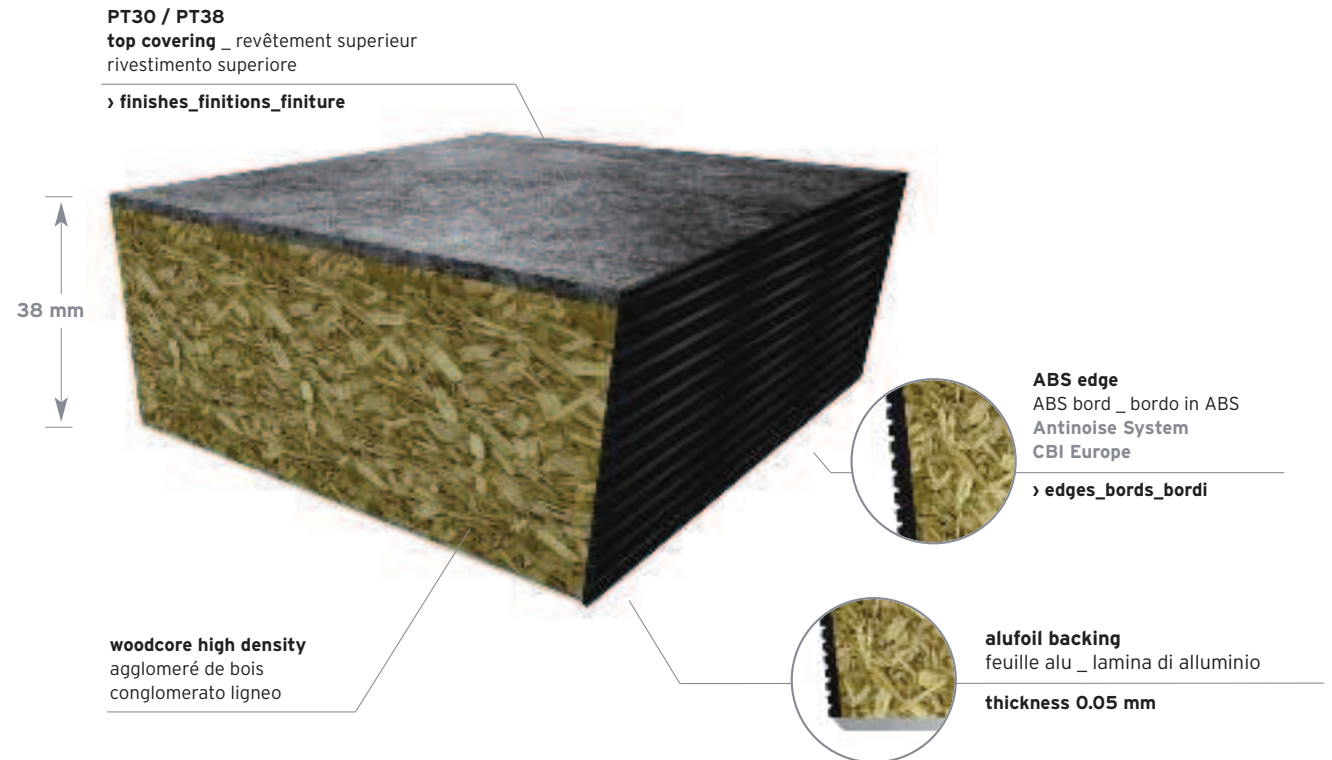
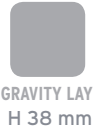


#### ALUFOIL BACKING \_ FEUILLE ALU \_ LAMINA DI ALLUMINIO

› **Alufoil backing** feuille alu\_lamina di alluminio **thickness 0.5 mm**

› **Woodcore high density** aggloméré de bois · conglomerato ligneo

› **Covering:** to be selected by the project manager on end-user. › **Revêtement supérieur:** choisi par la Direction Travaux selon le catalogue "Floors" de CBI Europe.. › **Rivestimento superiore:** a scelta della D.L. in qualsiasi tipo di rivestimento del catalogo Floors CBI Europe.



#### TECHNICAL SPECIFICATIONS

standard

		PT30	PT38
<b>thickness</b>		30 mm	38 mm
	fire reaction UNI EN 13501-1	Bfl-s1	Bfl-s1
	fire resistance UNI EN 13501-2	REI 30	REI 30

#### TECHNICAL FEATURES UNI EN 12825

CBI/ST		3,2 KN	4,0 KN
	center of panel - deflection 2,5 mm	3,2 KN	4,0 KN
	center of panel - ultimate load	9,0 KN	11,5 KN
	loading class	4	5
	center of panel - deflection 2,5 mm	3,3 KN	4,2 KN
	center of panel - ultimate load	9,5 KN	12,0 KN
	loading class	4	6
	center of panel - deflection 2,5 mm	3,5 KN	4,4 KN
	center of panel - ultimate load	10,0 KN	12,6 KN
	loading class	5	6

The load resistance tests have been performed in CBI Europe's internal laboratory and simulate the test method indicated by UNI EN 12825: 2001. The results obtained at a height of 20 cm may vary depending on the installation and the general conditions of the site. If the project requires a certification from a third party this must be explicitly requested.

Le prove di resistenza al carico sono state eseguite nel laboratorio interno CBI Europe e simulano il metodo di prova indicato dalla normativa UNI EN 12825:2001. I risultati ottenuti ad un'altezza di 20 cm possono variare in funzione dell'installazione e delle condizioni generali del cantiere. Qualora il progetto richieda una certificazione da un ente terzo questa dovrà essere espressamente richiesta.